



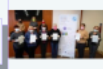
Introduction to Ludbreg's Initiatives

Ludbreg adopts a multifaceted approach to drive growth and resilience, focusing on social services, economic support, urban regeneration, and local development that emerged before and gained momentum during the COVID-19 pandemic.



Overview of Social Services

Ludbreg's social services are designed to provide essential support and assistance to vulnerable groups, including the elderly, long-term unemployed, and those in need of social care. These services are tailored to meet the specific needs of the community and ensure that no one is left behind.



Project Practices in Ludbreg: Adapting and Thriving Before and After COVID-19

Showcasing Sustainable Initiatives in Social Services, Economic Support, Urban Regeneration, and Local Development



"Zažeti u Ludbregu" - Empowering Social Services

The Zažeti u Ludbregu project empowers long-term unemployed women by providing essential social services and support to the elderly, showcasing a successful model for community upliftment and sustainable employment.



Support Measures During COVID-19

Overview of Support Measures

The COVID-19 pandemic has brought significant challenges to the community, particularly for vulnerable groups. Ludbreg has implemented a range of support measures to help these groups cope with the economic and social impacts of the pandemic. These measures include financial relief for businesses, assistance for citizens, and long-term economic resilience initiatives.

Financial Relief for Businesses

Businesses have been hit hard by the pandemic, with many facing cash flow problems and reduced demand. Ludbreg has implemented a range of financial relief measures to help businesses stay afloat, including grants, loans, and tax relief. These measures have helped businesses maintain their operations and create jobs, ensuring the community's economic resilience.

Assistance for Citizens

Citizens have also been affected by the pandemic, with many facing financial difficulties and social isolation. Ludbreg has implemented a range of assistance measures to help citizens cope, including food banks, counseling, and social support groups. These measures have helped citizens maintain their well-being and resilience during these challenging times.



LAG 'Lavor' - Local Governance and Development

LAG 'Lavor' is a local governance and development initiative that focuses on creating sustainable employment opportunities and improving the quality of life in the community. It involves a range of activities, including training, mentorship, and business development support, all aimed at empowering local residents and fostering economic growth.

The LAG Approach

The LAG approach is based on a range of principles, including community participation, transparency, and accountability. It involves a range of activities, including training, mentorship, and business development support, all aimed at empowering local residents and fostering economic growth.

Project Overview

The project overview provides a detailed look at the various initiatives and activities that are part of the LAG 'Lavor' program. It highlights the range of support measures available to local residents and the impact of these measures on the community's economic and social resilience.



Introduction to Ludbreg's Initiatives

Ludbreg adopts a multifaceted approach to drive growth and resilience, focusing on social services, economic support, urban regeneration, and local development that emerged before and gained momentum during the COVID-19 pandemic.

Overview of Social Services

In Ludbreg, social services are enhanced through initiatives like 'Zaželi u Ludbregu,' which employs long-term unemployed women as caregivers for the elderly and disabled. This project addresses community needs while improving the employability of its participants, thereby fostering social inclusion and reducing unemployment in the region.



"Zaželi u Ludbregu" - Empowering Social Services

The Zaželi u Ludbregu project empowers long-term unemployed women by providing essential social services and support to the elderly, showcasing a successful model for community upliftment and sustainable employment.

Project Overview

The "Zaželi u Ludbregu" project employs 25 long-term unemployed women over 50 years old as gerontodomačice (home care workers). This initiative aims to provide support to 150 elderly and disabled individuals while simultaneously reducing unemployment and enhancing employability through targeted training programs.



Employment and Training Initiatives

Participants in the Zaželi project receive training in essential skills and care techniques, fostering employability and personal growth. This training not only equips them for immediate employment but also enhances their long-term career prospects in the care sector.



Services Provided to the Elderly

The project's gerontodomaćice offer daily support activities, including assistance with household chores, personal hygiene, and fostering social interactions. This helps improve the quality of life for elderly individuals, reducing the need for institutional care.



Funding and Partnerships

Zaželi u Ludbregu has a total budget of 310.000€, with funding sourced from the European Social Fund (85%) and the Croatian State Budget (15%). The project collaborates with employment offices, local municipalities, and social welfare centers to maximize its impact.



Social Impact and Sustainability

The Zaželi project fosters social inclusion, reducing isolation for elderly residents while empowering participants with economic stability and community belonging. Its sustainable approach ensures ongoing support for both caregivers and recipients as community needs evolve.





Support Measures During COVID-19

Ludbreg's comprehensive support measures during the COVID-19 pandemic effectively targeted businesses and vulnerable populations, ensuring economic stability and resilience.

Overview of Support Measures

Ludbreg's response to COVID-19 aimed to relieve financial strain on businesses and citizens. Key measures were implemented to provide economic aid, tax relief, and support for essential services, addressing immediate and long-term needs.



Financial Relief for Businesses

Businesses in Ludbreg benefited from waivers of municipal fees and rent exemptions for city-owned properties. Direct financial aid based on pre-pandemic taxes was also provided to support the struggling hospitality sector.



Assistance for Citizens

The community received household relief measures, including exemption from fixed waste disposal fees and direct aid for unemployment. Furthermore, subsidies for kindergarten fees continued, alleviating financial pressure on families during closures.



Sector-Specific Aid

Targeted financial assistance was extended to agriculture, particularly for flower growers and vegetable farmers affected by income loss. In total, 240,000 € were allocated for economic support and 130,000 € specifically for agricultural relief.



Long-Term Economic Resilience

The measures taken during the pandemic have stabilized Ludbreg's local economy, allowing businesses to sustain operations and retain employees. Strengthened economic ties prepared enterprises for recovery and future growth beyond the pandemic.





Revitalizing Urban Spaces: "The Walkway on Otok Mladosti"

The renovation of the Walkway on Otok Mladosti aims to transform it into a vibrant central green space, enhancing community health and engagement.

Project Overview

The Walkway on Otok Mladosti project focuses on revitalizing a central green space to promote health and community interactions. By upgrading pathways and enhancing green areas, the initiative aims to foster outdoor activities and social engagement among residents.





Key Features of the Renovation



The renovation includes upgraded walkways that feature safe, well-maintained paths and newly installed amenities such as benches, some equipped with chess boards. These enhancements aim to connect vital areas within Ludbreg and provide leisure opportunities for the community.

Community Engagement and Benefits

The Walkway on Otok Mladosti has become a popular destination for walkers, joggers, and families, featuring a safe environment for various outdoor activities. This project significantly enhances the community's well-being and promotes interaction during the pandemic.



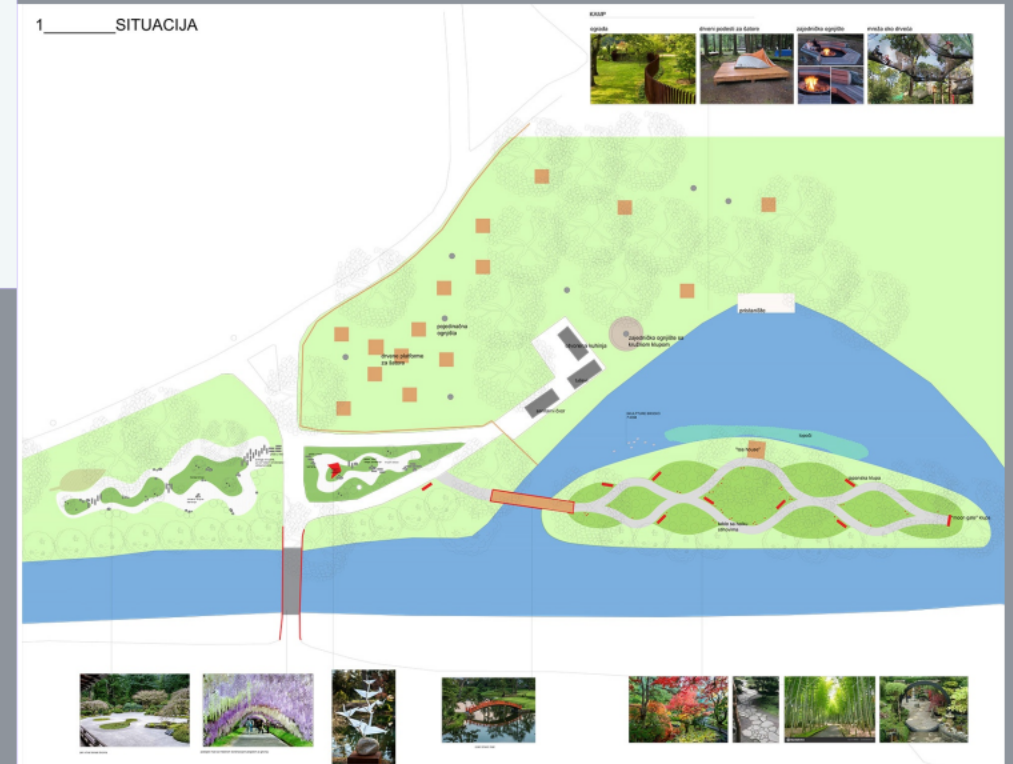
Environmental Sustainability

Key environmental initiatives within the project include tree planting and maintaining biodiversity, aimed at preserving local flora and fauna. Ensuring that Otok Mladosti remains a natural habitat promotes ecological balance and encourages sustainable practices within the community.



Future Development and Sustainability

The long-term vision for the Walkway on Otok Mladosti includes continued improvements and maintenance to keep the space vibrant and sustainable. The project aims to foster healthier lifestyles and strengthen community ties through the enhancement of urban green spaces.



LAG 'Izvor' - Local Governance and Development

LAG 'Izvor' represents a collaborative approach to sustainable rural development, combining efforts from public, private, and civil sectors to address local needs effectively.



Introduction to LAG

Local Action Groups (LAGs) are community-driven organizations aimed at promoting sustainable rural development through partnerships across sectors. They focus on addressing local challenges while fostering community involvement and empowerment.

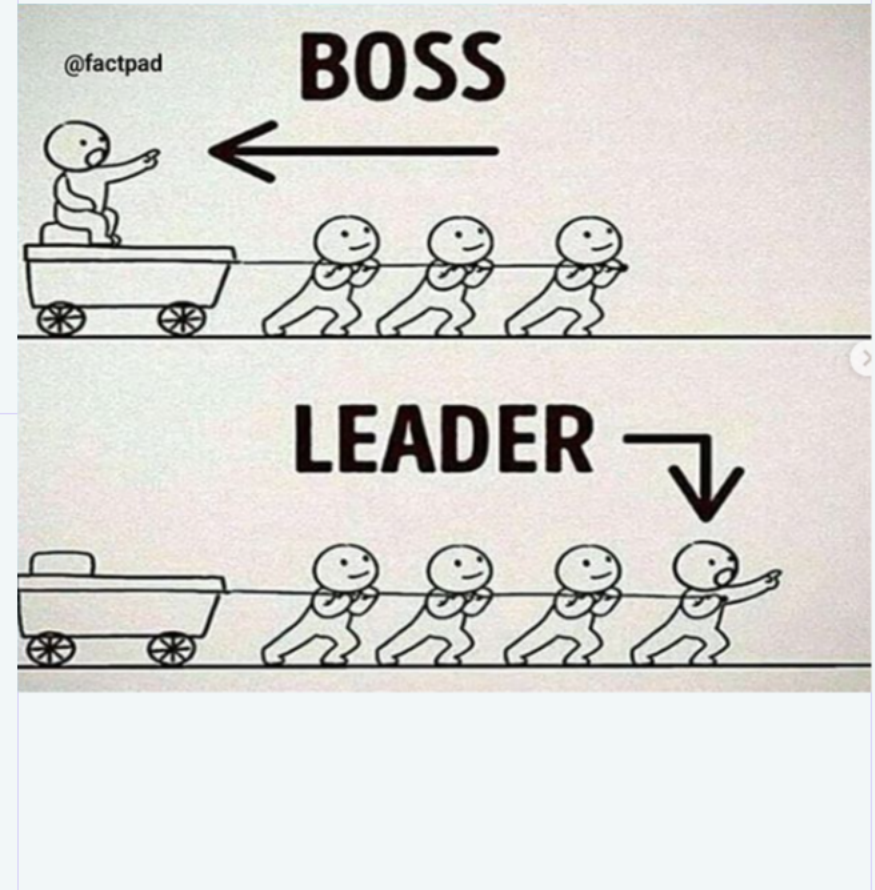
About LAG 'Izvor'

LAG 'Izvor' operates across 3 cities and 7 municipalities, covering an area of 582.93 km² with a population of 63,651. The Group works to promote sustainable development practices tailored to the unique characteristics of the region.



The LEADER Approach

The LEADER methodology emphasizes community-led development, relying on local leadership and collaboration. This approach is designed to innovate and adapt strategies based on the specific needs of the community, facilitating inclusive progress.



Participatory Decision- Making

Participatory decision-making empowers local communities by allowing them to influence project selection and implementation. This approach promotes equality and ensures that initiatives are relevant, addressing actual community needs.





Projects Funded by LAG 'Izvor' in Ludbreg

LAG 'Izvor' has funded projects including multifunctional playgrounds and the renovation of a local fire station. These projects contribute to community cohesion, enhance public services, and improve recreational spaces for residents.





Introduction to Ludbreg's Initiatives

Ludbreg adopts a multifaceted approach to drive growth and resilience, focusing on social services, economic support, urban regeneration, and local development that emerged before and gained momentum during the COVID-19 pandemic.



Overview of Social Services

Ludbreg's social services are designed to provide essential support and assistance to vulnerable groups, including the elderly, long-term unemployed, and those in need of social care. These services aim to improve the quality of life and foster a sense of community and belonging.



Project Practices in Ludbreg: Adapting and Thriving Before and After COVID-19

Showcasing Sustainable Initiatives in Social Services, Economic Support, Urban Regeneration, and Local Development



"Zažeti u Ludbregu" - Empowering Social Services

The Zažeti u Ludbregu project empowers long-term unemployed women by providing essential social services and support to the elderly, showcasing a successful model for community upliftment and sustainable employment.



Support Measures During COVID-19

Overview of Support Measures

Ludbreg implemented a range of support measures to assist businesses and individuals during the COVID-19 pandemic. These measures included financial relief, technical assistance, and access to essential services.



Financial Relief for Businesses

Ludbreg provided financial relief to businesses affected by the pandemic, including grants, loans, and interest-free advances. These measures helped businesses maintain their operations and protect their employees.



Sustainable Development

Ludbreg is committed to sustainable development, focusing on economic growth, social inclusion, and environmental protection. This commitment is reflected in the project's initiatives and outcomes.

Project Overview

The project aims to empower long-term unemployed women and provide essential social services to the elderly. It showcases a successful model for community upliftment and sustainable employment.



LAG 'Tavor' - Local Governance and Development

LAG 'Tavor' is a local governance and development organization that works to improve the quality of life and foster a sense of community and belonging. It implements various initiatives and programs to support the local community.

About LAG 'Tavor'

LAG 'Tavor' is a local governance and development organization that works to improve the quality of life and foster a sense of community and belonging. It implements various initiatives and programs to support the local community.